

# Prove di Istituto 2023

Risultati delle prove intermedie  
Scuola Primaria  
Analisi dei dati

Giugno 2023



# General overview

- I risultati delle prove finali nelle varie classi sono stati sintetizzati in diversi grafici.
- Il numero totale di allievi esaminati è di **207** , e risulta così suddiviso:

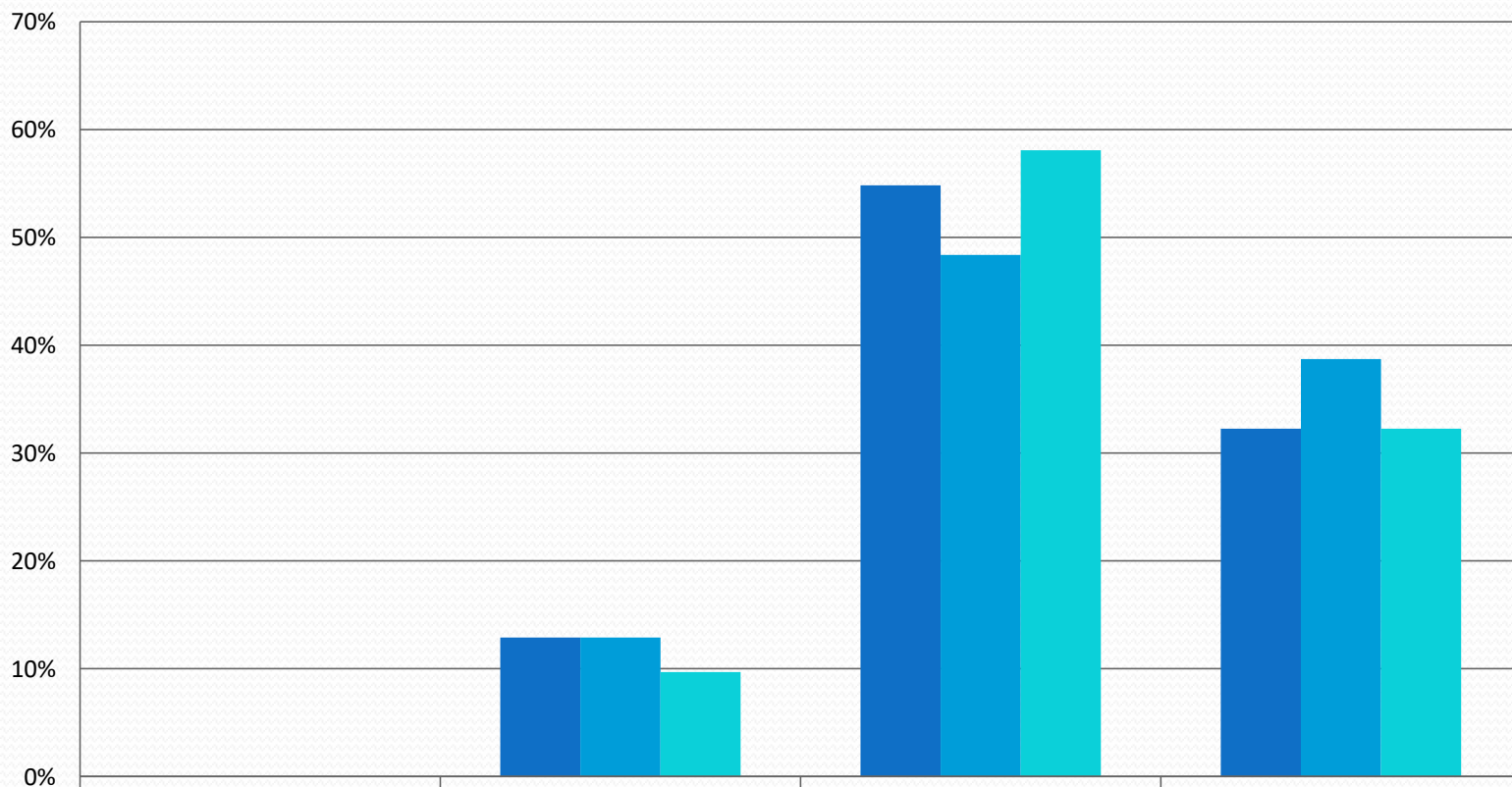
	BASSIGNANA	CASTELLETTO	S.SALVATORE
Classi PRIME	2	12	18
Classi SECONDE	6	13	24
Classi TERZE	7	10	32
Classi QUARTE	6	7	29
Classi QUINTE	10	5	26

- Le percentuali di successo nelle varie discipline si attestano in media a:

	<b>IN VIA DI PRIMA ACQUISIZIONE</b>	<b>AVANZATO</b>
CLASSI PRIME	0,00%	34,41%
CLASSI SECONDE	3,88%	24,81%
CLASSI TERZE	6,00%	34,00%
CLASSI QUARTE	0,82%	27,05%
CLASSI QUINTE	5,69%	14,63%

# MEDIA GENERALE

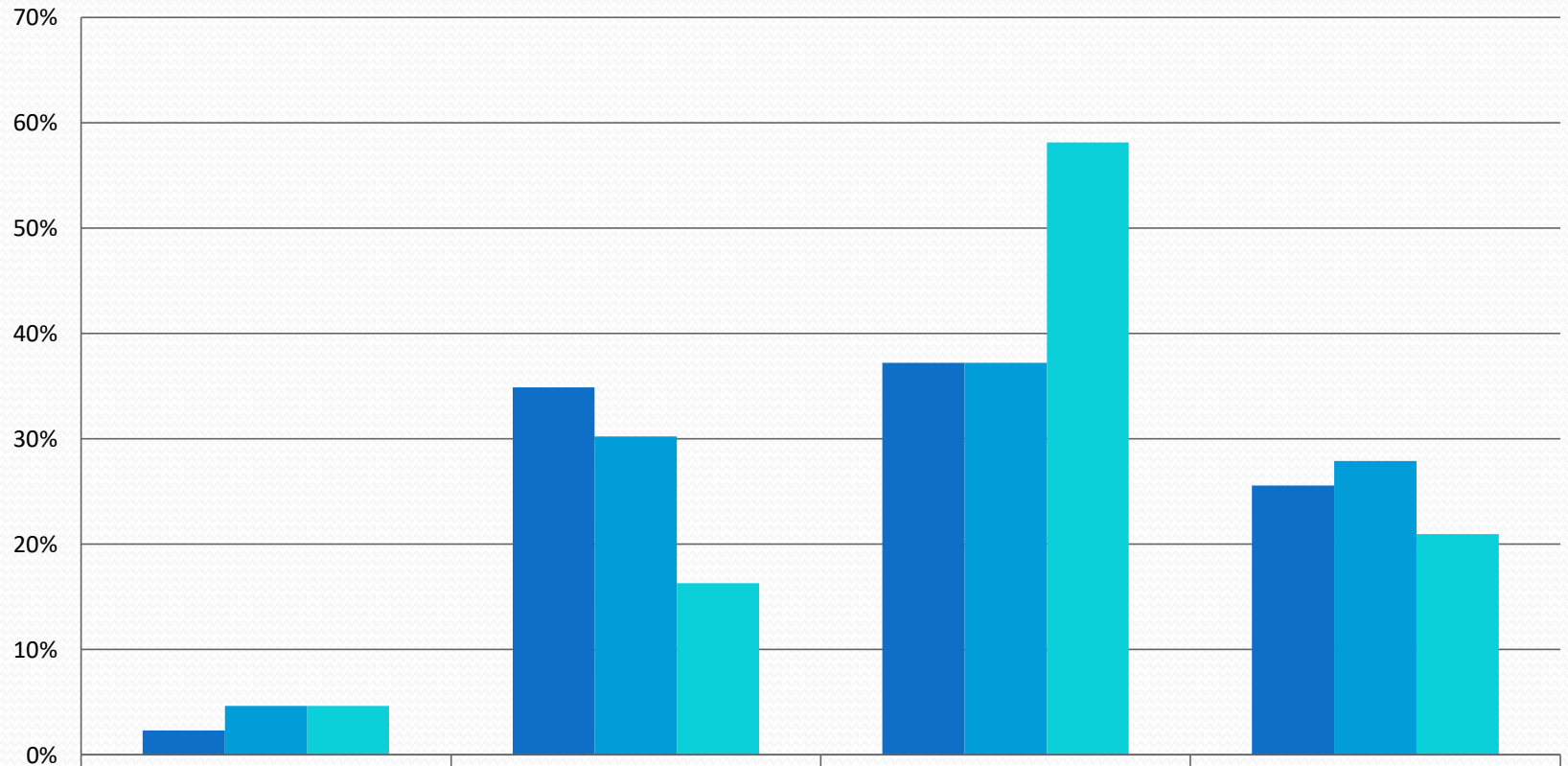
## TOTALI CLASSI PRIME



	N	B	I	A
■ ITALIANO	0,00%	12,90%	54,84%	32,26%
■ MATEMATICA	0,00%	12,90%	48,39%	38,71%
■ INGLESE	0,00%	9,68%	58,06%	32,26%

# MEDIA GENERALE

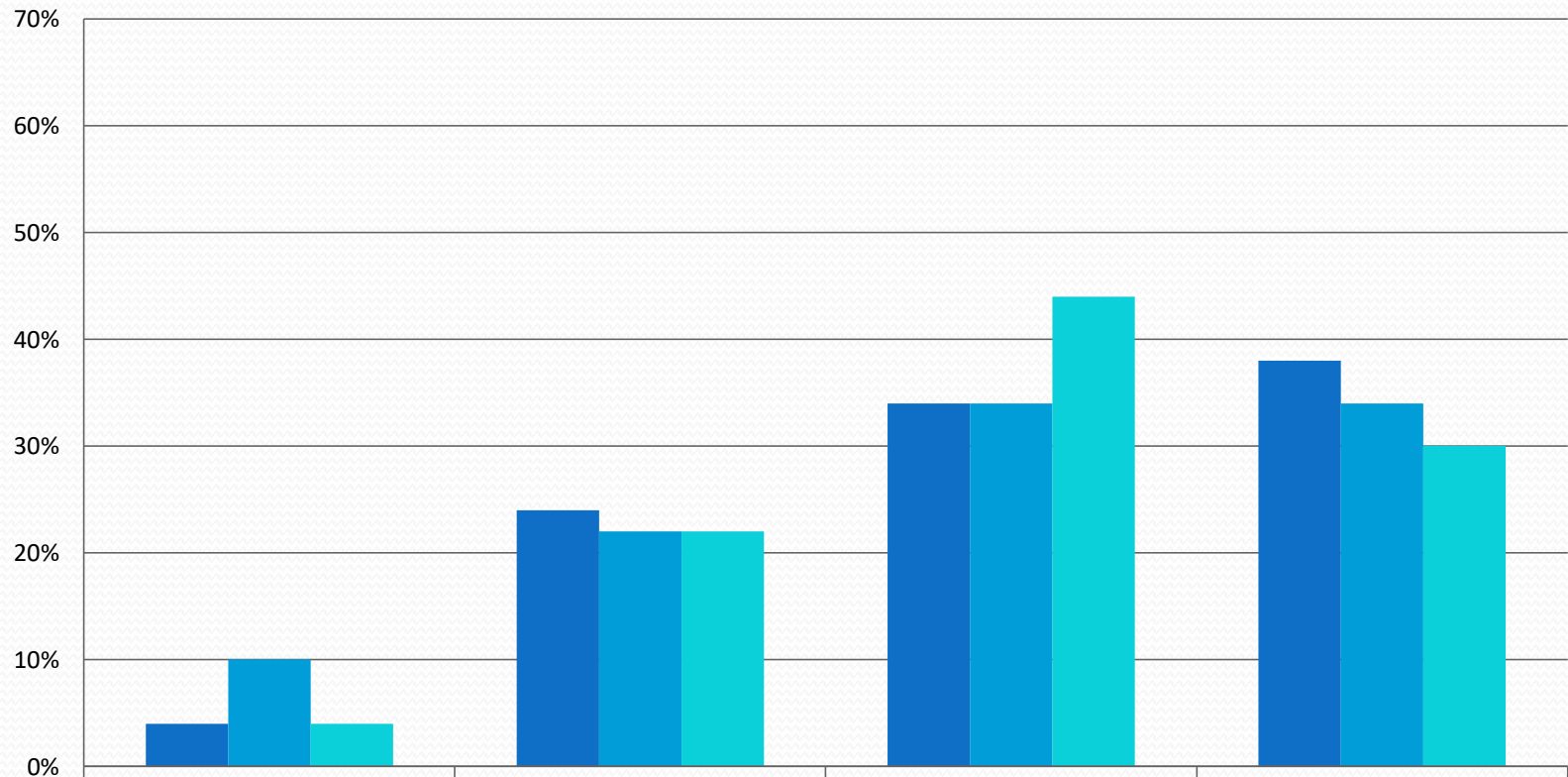
## TOTALI CLASSI SECONDE



	N	B	I	A
ITALIANO	2,33%	34,88%	37,21%	25,58%
MATEMATICA	4,65%	30,23%	37,21%	27,91%
INGLESE	4,65%	16,28%	58,14%	20,93%

# MEDIA GENERALE

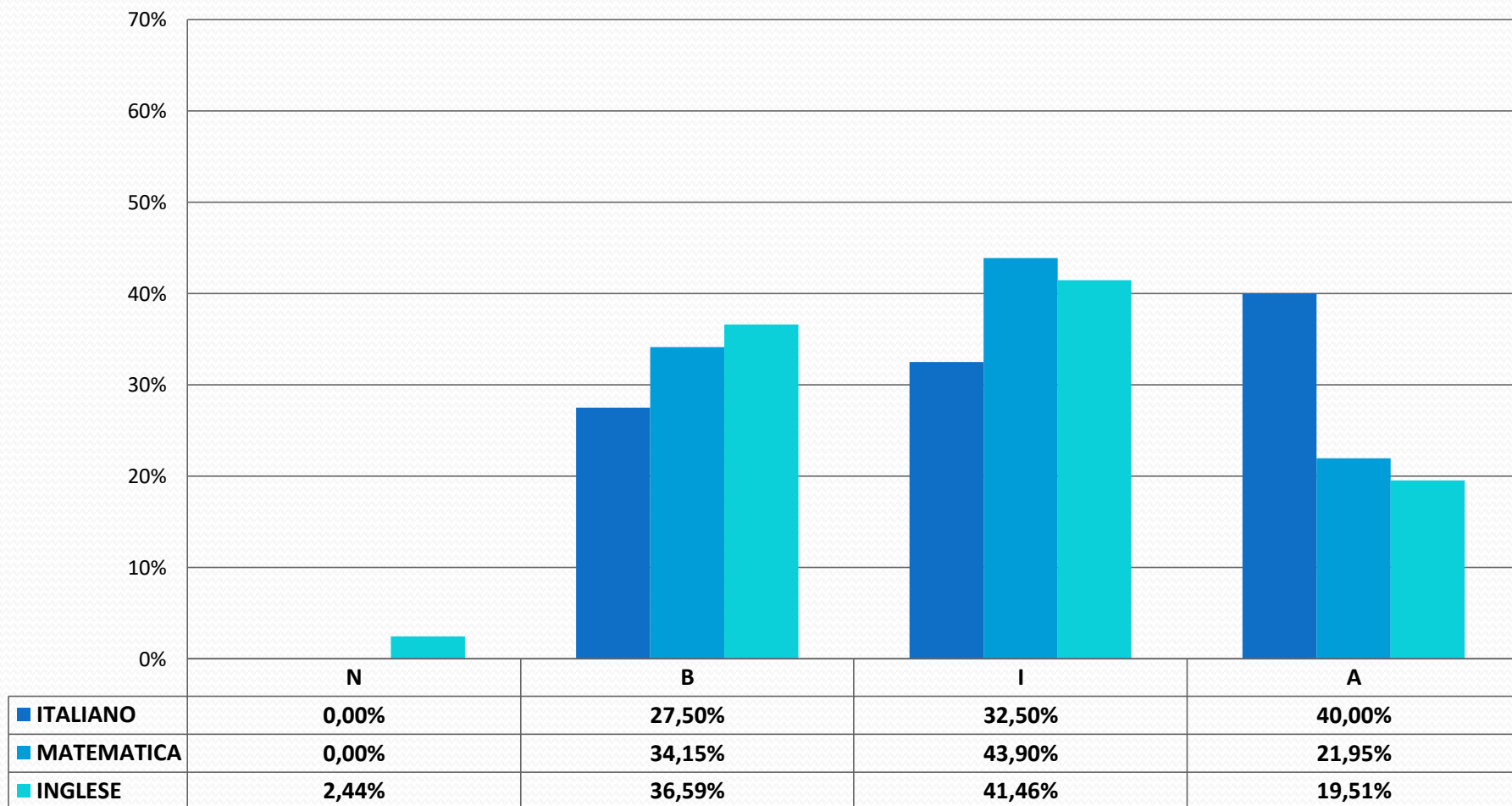
## TOTALI CLASSI TERZE



	N	B	I	A
ITALIANO	4,00%	24,00%	34,00%	38,00%
MATEMATICA	10,00%	22,00%	34,00%	34,00%
INGLESE	4,00%	22,00%	44,00%	30,00%

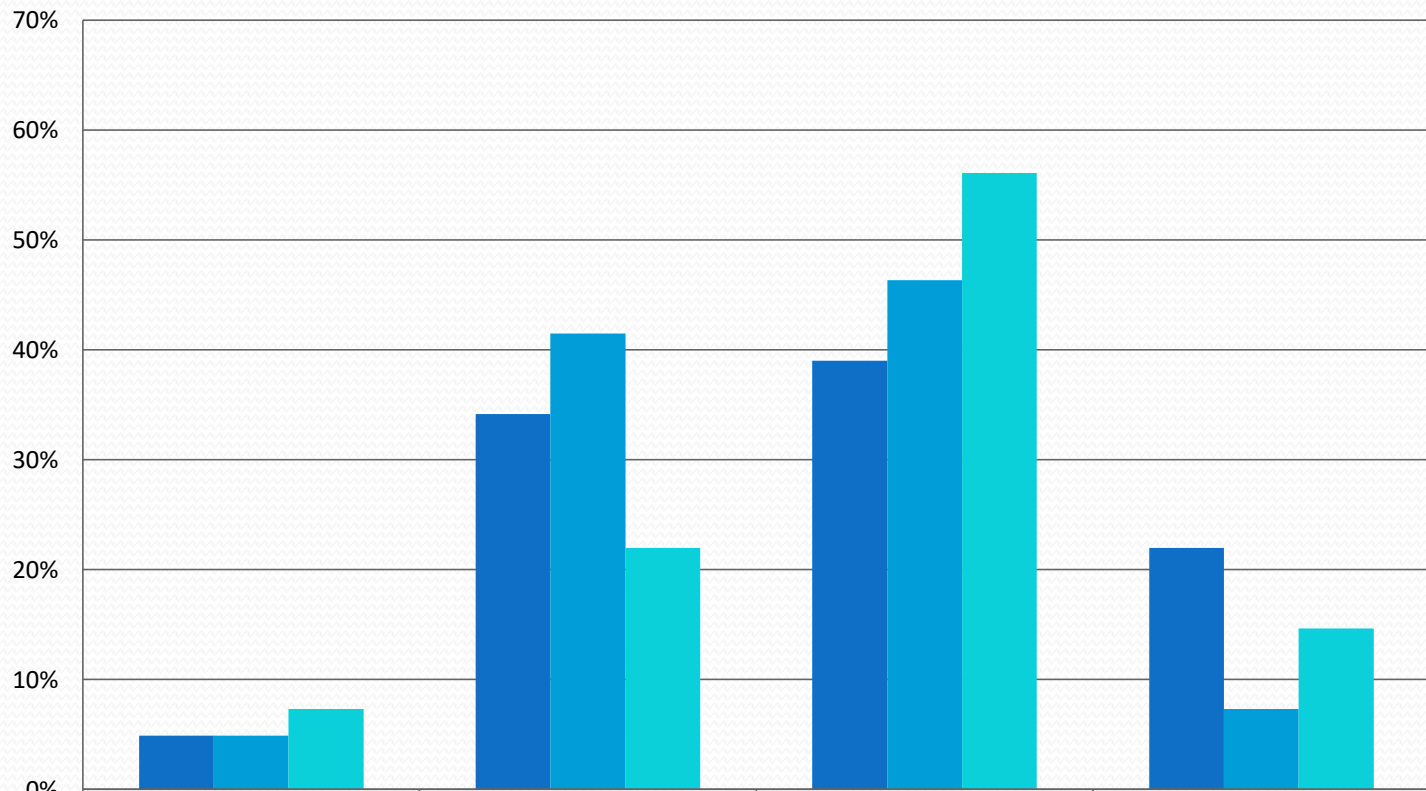
# MEDIA GENERALE

## TOTALI CLASSI QUARTE



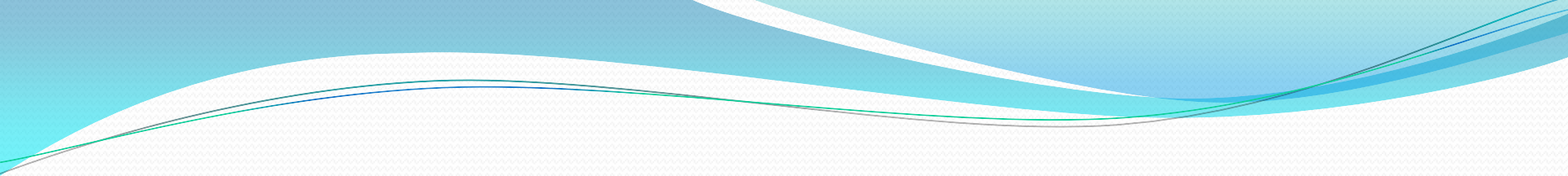
# MEDIA GENERALE

## TOTALI CLASSI QUINTE



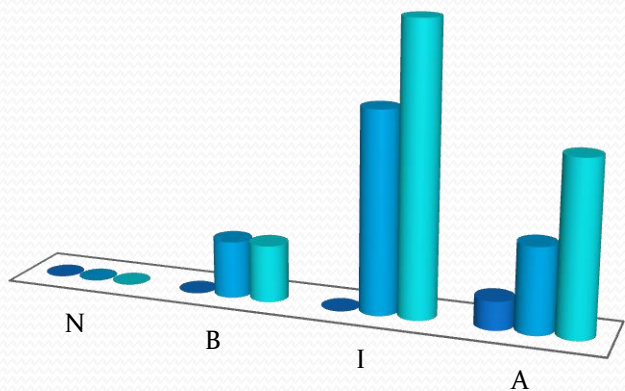
	N	B	I	A
■ ITALIANO	4,88%	34,15%	39,02%	21,95%
■ MATEMATICA	4,88%	41,46%	46,34%	7,32%
■ INGLESE	7,32%	21,95%	56,10%	14,63%



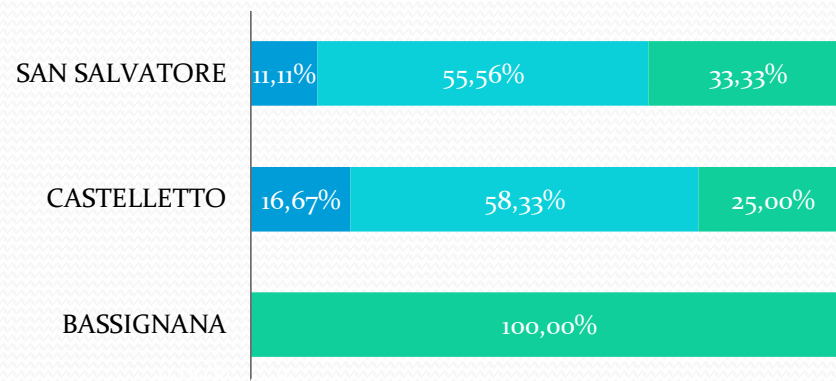


Le prossime diapositive analizzano i risultati che gli alunni hanno raggiunto in italiano, matematica e inglese nelle prove intermedie suddivisi per classi.

# CLASSI PRIME ITALIANO

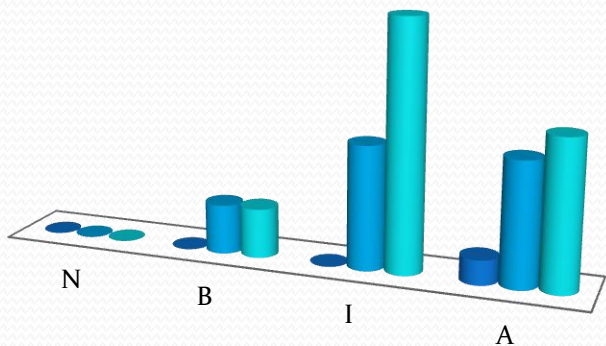


	N	B	I	A
■ BASSIGNANA	0	0	0	1
■ CASTELLETTO	0	2	7	3
■ SAN SALVATORE	0	2	10	6

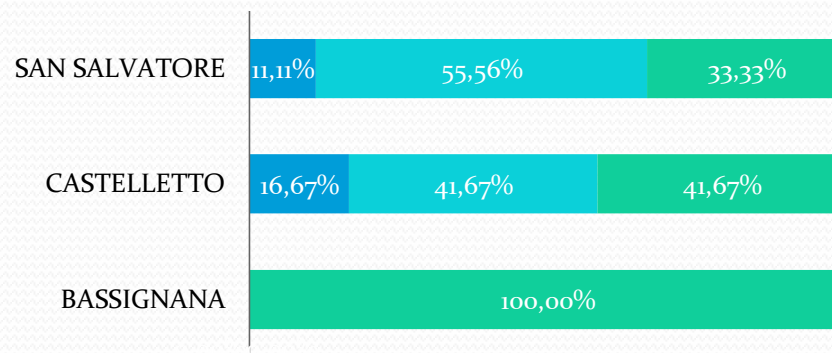


	BASSIGNANA	CASTELLETTO	SAN SALVATORE
■ N	0,00%	0,00%	0,00%
■ B	0,00%	16,67%	11,11%
■ I	0,00%	58,33%	55,56%
■ A	100,00%	25,00%	33,33%

# CLASSI PRIME MATEMATICA

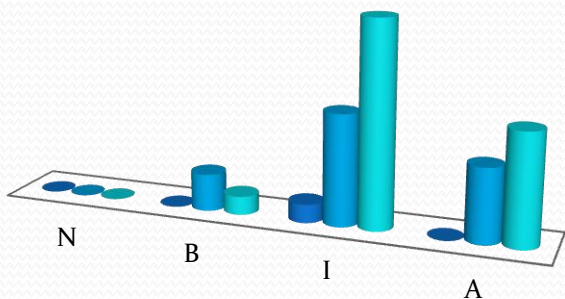


	N	B	I	A
■ BASSIGNANA	0	0	0	1
■ CASTELLETO	0	2	5	5
■ SAN SALVATORE	0	2	10	6

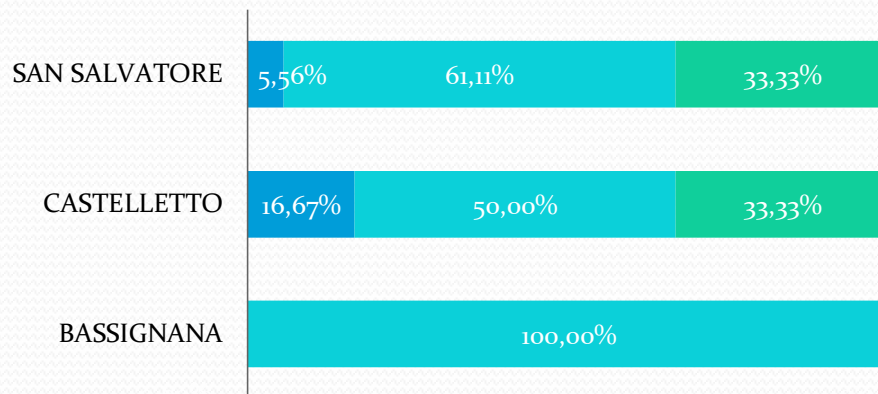


	BASSIGNANA	CASTELLETO	SAN SALVATORE
■ N	0,00%	0,00%	0,00%
■ B	0,00%	16,67%	11,11%
■ I	0,00%	41,67%	55,56%
■ A	100,00%	41,67%	33,33%

# CLASSI PRIME INGLESE

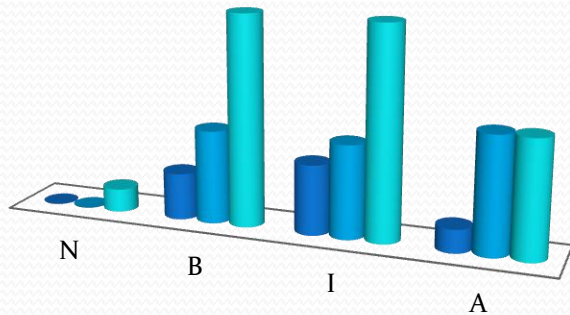


	N	B	I	A
■ BASSIGNANA	0	0	1	0
■ CASTELLETTO	0	2	6	4
■ SAN SALVATORE	0	1	11	6

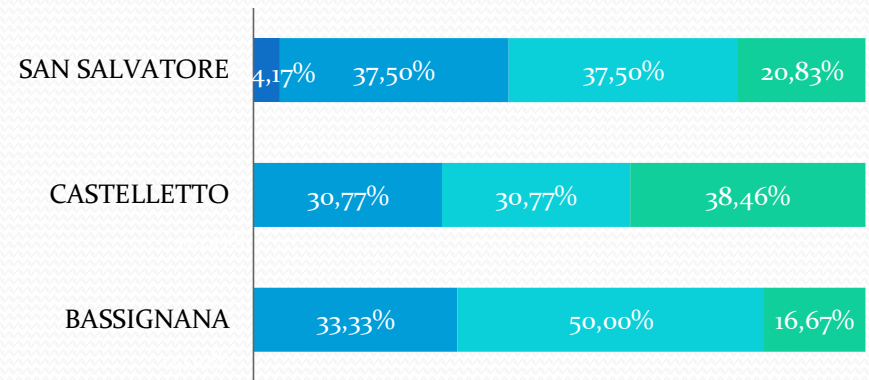


	BASSIGNANA	CASTELLETTO	SAN SALVATORE
■ N	0,00%	0,00%	0,00%
■ B	0,00%	16,67%	5,56%
■ I	100,00%	50,00%	61,11%
■ A	0,00%	33,33%	33,33%

# CLASSI SECONDE ITALIANO

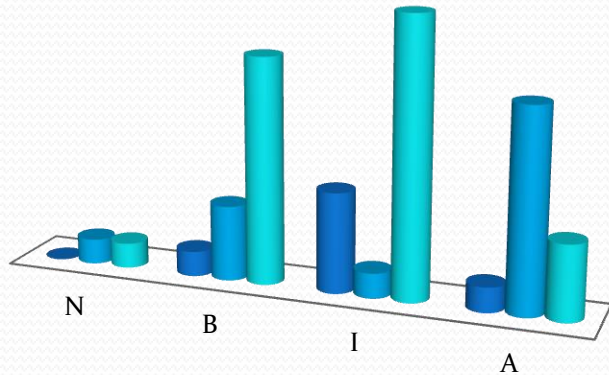


	N	B	I	A
■ BASSIGNANA	0	2	3	1
■ CASTELLETTO	0	4	4	5
■ SAN SALVATORE	1	9	9	5

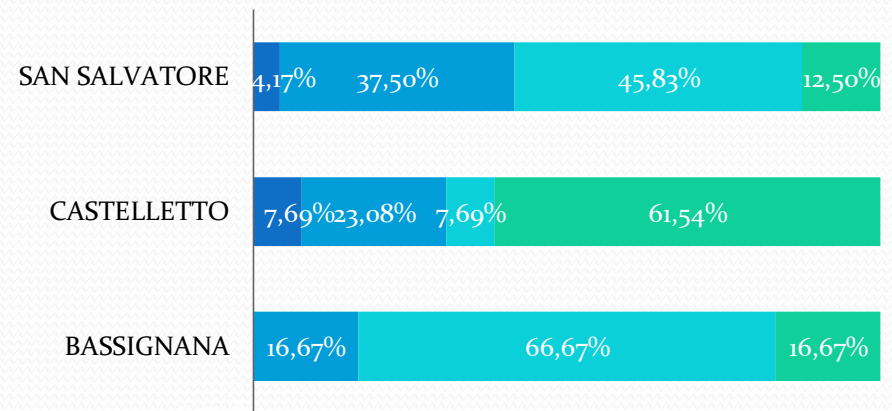


	BASSIGNANA	CASTELLETTO	SAN SALVATORE
■ N	0,00%	0,00%	4,17%
■ B	33,33%	30,77%	37,50%
■ I	50,00%	30,77%	37,50%
■ A	16,67%	38,46%	20,83%

# CLASSI SECONDE MATEMATICA

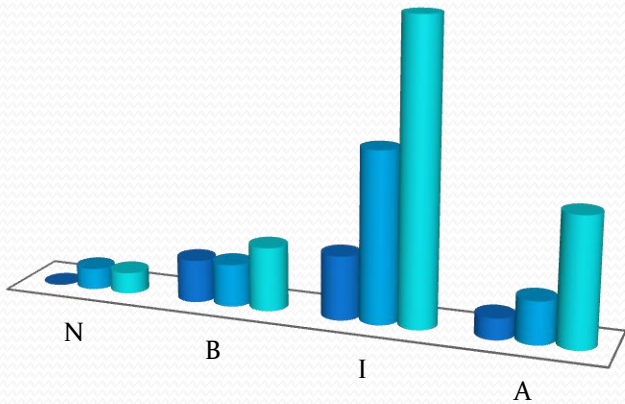


	N	B	I	A
■ BASSIGNANA	0	1	4	1
■ CASTELLETTO	1	3	1	8
■ SAN SALVATORE	1	9	11	3

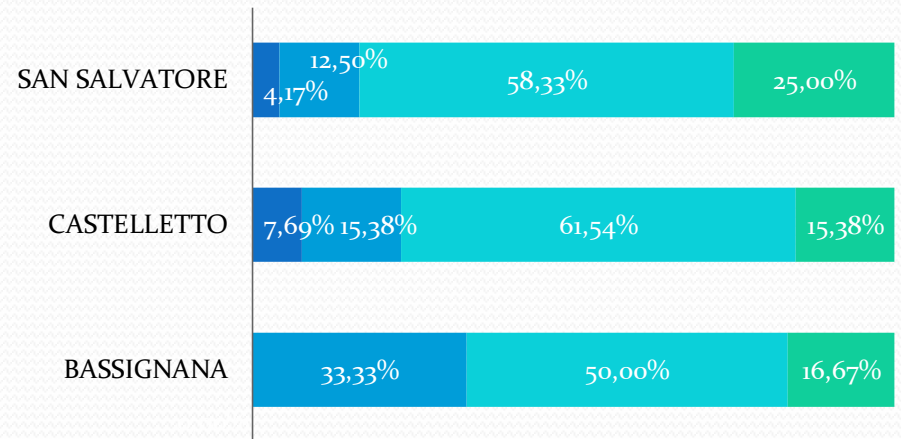


	BASSIGNANA	CASTELLETTO	SAN SALVATORE
■ N	0,00%	7,69%	4,17%
■ B	16,67%	23,08%	37,50%
■ I	66,67%	7,69%	45,83%
■ A	16,67%	61,54%	12,50%

# CLASSI SECONDE INGLESE

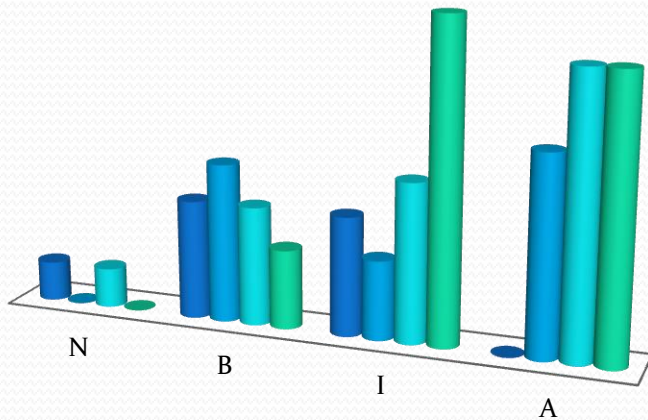


	N	B	I	A
■ BASSIGNANA	0	2	3	1
■ CASTELLETTO	1	2	8	2
■ SAN SALVATORE	1	3	14	6

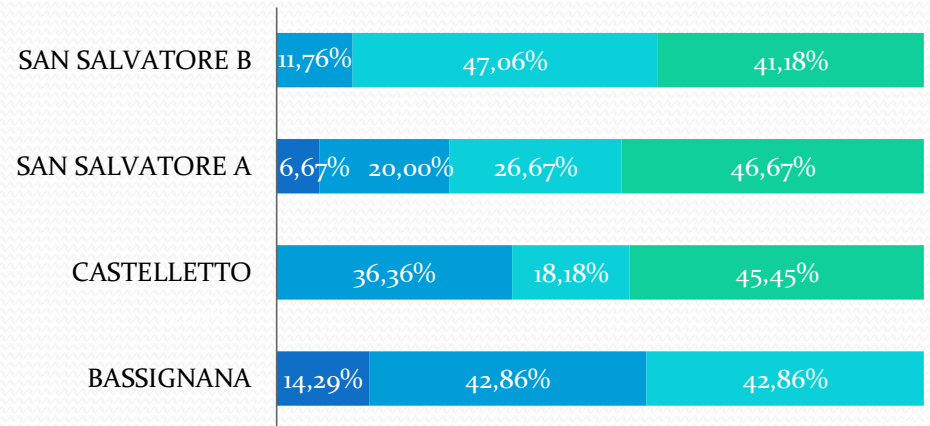


	BASSIGNANA	CASTELLETTO	SAN SALVATORE
■ N	0,00%	7,69%	4,17%
■ B	33,33%	15,38%	12,50%
■ I	50,00%	61,54%	58,33%
■ A	16,67%	15,38%	25,00%

# CLASSI TERZE ITALIANO



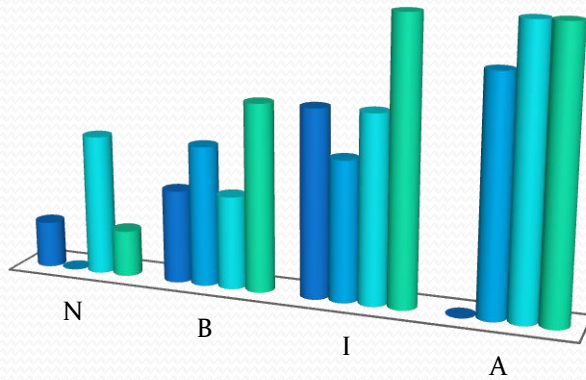
	N	B	I	A
■ BASSIGNANA	1	3	3	0
■ CASTELLETTO	0	4	2	5
■ SAN SALVATORE A	1	3	4	7
■ SAN SALVATORE B	0	2	8	7



	BASSIGNANA	CASTELLETTO	SAN SALVATORE A	SAN SALVATORE B
■ N	14,29%	0,00%	6,67%	0,00%
■ B	42,86%	36,36%	20,00%	11,76%
■ I	42,86%	18,18%	26,67%	47,06%
■ A	0,00%	45,45%	46,67%	41,18%



# CLASSI TERZE MATEMATICA



	N	B	I	A
■ BASSIGNANA	1	2	4	0
■ CASTELLETO	0	3	3	5
■ SAN SALVATORE A	3	2	4	6
■ SAN SALVATORE B	1	4	6	6

SAN SALVATORE B



SAN SALVATORE A



CASTELLETO

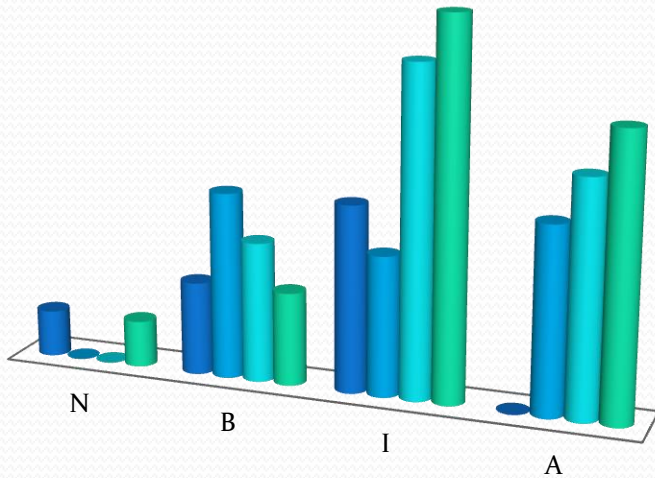


BASSIGNANA

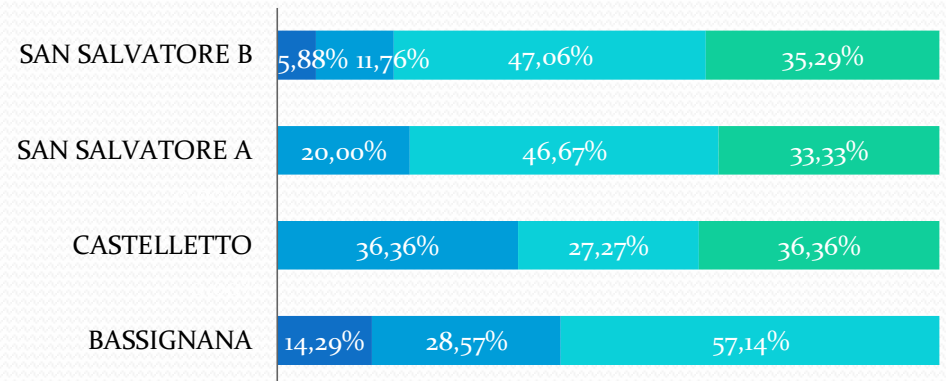


	BASSIGNANA	CASTELLETO	SAN SALVATORE A	SAN SALVATORE B
■ N	14,29%	0,00%	20,00%	5,88%
■ B	28,57%	27,27%	13,33%	23,53%
■ I	57,14%	27,27%	26,67%	35,29%
■ A	0,00%	45,45%	40,00%	35,29%

# CLASSI TERZE INGLESE

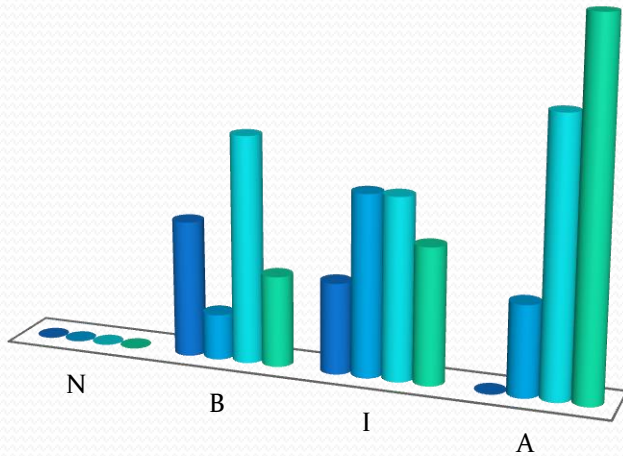


	N	B	I	A
■ BASSIGNANA	1	2	4	0
■ CASTELLETTO	0	4	3	4
■ SAN SALVATORE A	0	3	7	5
■ SAN SALVATORE B	1	2	8	6



	BASSIGNANA	CASTELLETTO	SAN SALVATORE A	SAN SALVATORE B
■ N	14,29%	0,00%	0,00%	5,88%
■ B	28,57%	36,36%	20,00%	11,76%
■ I	57,14%	27,27%	46,67%	47,06%
■ A	0,00%	36,36%	33,33%	35,29%

# CLASSI QUARTE ITALIANO



	N	B	I	A
■ BASSIGNANA	0	3	2	0
■ CASTELLETTO	0	1	4	2
■ SAN SALVATORE A	0	5	4	6
■ SAN SALVATORE B	0	2	3	8

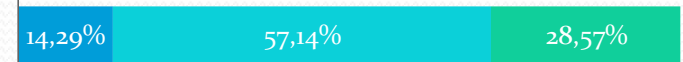
SAN SALVATORE B



SAN SALVATORE A



CASTELLETTO

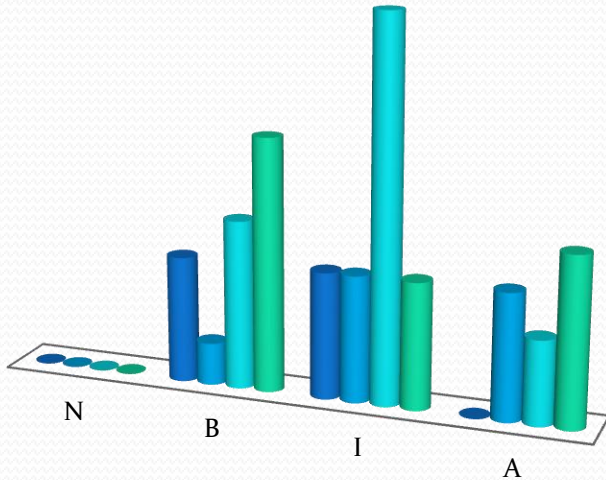


BASSIGNANA



	BASSIGNANA	CASTELLETTO	SAN SALVATORE A	SAN SALVATORE B
■ N	0,00%	0,00%	0,00%	0,00%
■ B	60,00%	14,29%	33,33%	15,38%
■ I	40,00%	57,14%	26,67%	23,08%
■ A	0,00%	28,57%	40,00%	61,54%

# CLASSI QUARTE MATEMATICA



	N	B	I	A
■ BASSIGNANA	0	3	3	0
■ CASTELLETTO	0	1	3	3
■ SAN SALVATORE A	0	4	9	2
■ SAN SALVATORE B	0	6	3	4

SAN SALVATORE B

46,15%

23,08%

30,77%

SAN SALVATORE A

26,67%

60,00%

13,33%

CASTELLETTO

14,29%

42,86%

42,86%

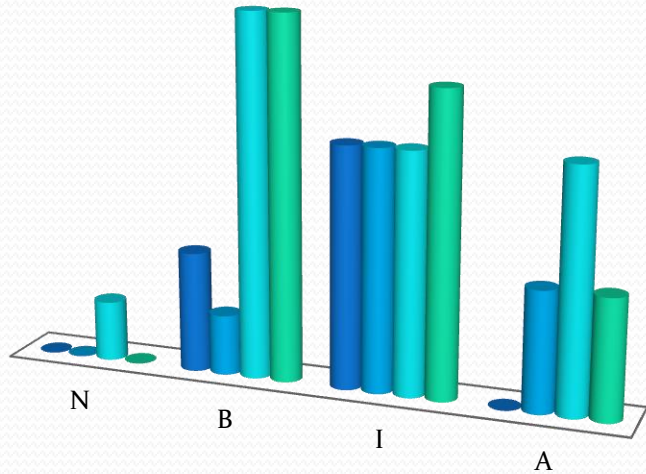
BASSIGNANA

50,00%

50,00%

	BASSIGNANA	CASTELLETTO	SAN SALVATORE A	SAN SALVATORE B
■ N	0,00%	0,00%	0,00%	0,00%
■ B	50,00%	14,29%	26,67%	46,15%
■ I	50,00%	42,86%	60,00%	23,08%
■ A	0,00%	42,86%	13,33%	30,77%

# CLASSI QUARTE INGLESE



	N	B	I	A
■ BASSIGNANA	0	2	4	0
■ CASTELLETTO	0	1	4	2
■ SAN SALVATORE A	1	6	4	4
■ SAN SALVATORE B	0	6	5	2

SAN SALVATORE B



SAN SALVATORE A



CASTELLETTO

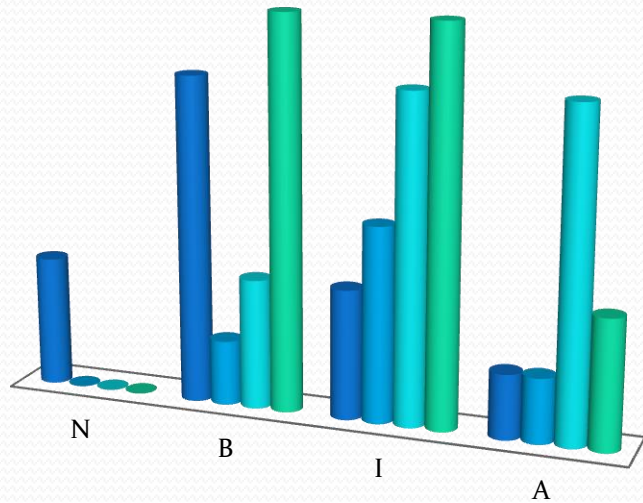


BASSIGNANA



	BASSIGNANA	CASTELLETTO	SAN SALVATORE A	SAN SALVATORE B
■ N	0,00%	0,00%	6,67%	0,00%
■ B	33,33%	14,29%	40,00%	46,15%
■ I	66,67%	57,14%	26,67%	38,46%
■ A	0,00%	28,57%	26,67%	15,38%

# CLASSI QUINTE ITALIANO



	N	B	I	A
■ BASSIGNANA	2	5	2	1
■ CASTELLETTO	0	1	3	1
■ SAN SALVATORE A	0	2	5	5
■ SAN SALVATORE B	0	6	6	2

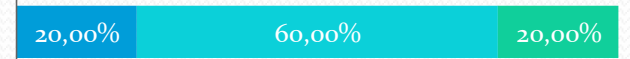
SAN SALVATORE B



SAN SALVATORE A



CASTELLETTO

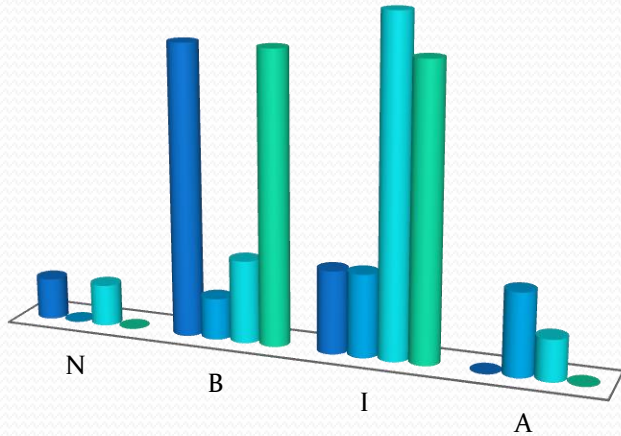


BASSIGNANA

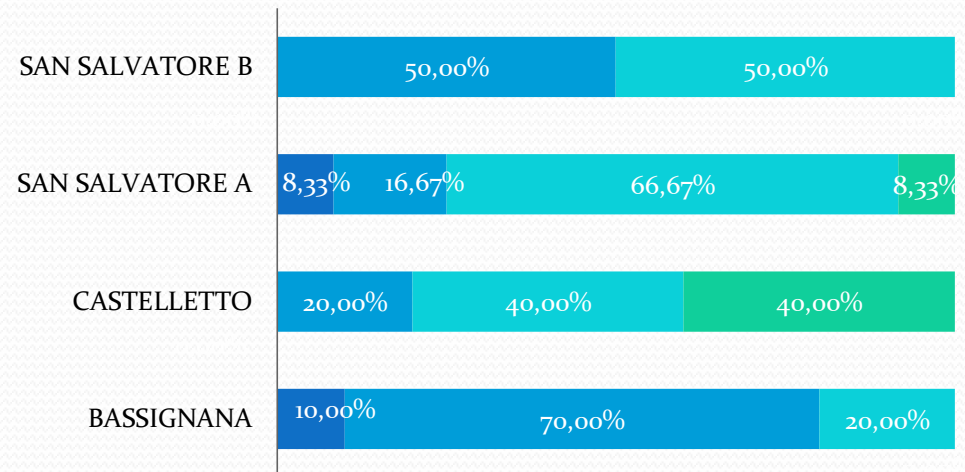


	BASSIGNANA	CASTELLETTO	SAN SALVATORE A	SAN SALVATORE B
■ N	20,00%	0,00%	0,00%	0,00%
■ B	50,00%	20,00%	16,67%	42,86%
■ I	20,00%	60,00%	41,67%	42,86%
■ A	10,00%	20,00%	41,67%	14,29%

# CLASSI QUINTE MATEMATICA

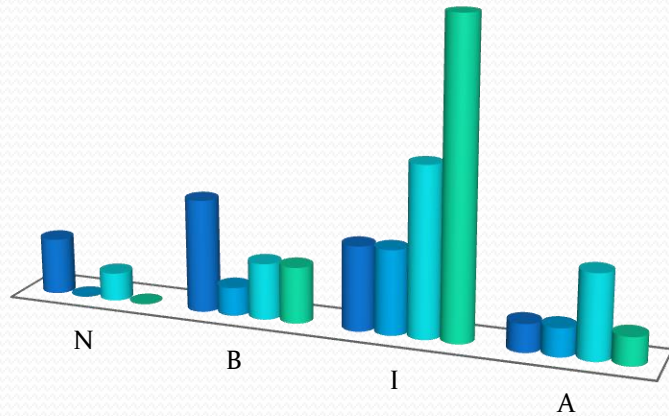


	N	B	I	A
■ BASSIGNANA	1	7	2	0
■ CASTELLETTO	0	1	2	2
■ SAN SALVATORE A	1	2	8	1
■ SAN SALVATORE B	0	7	7	0

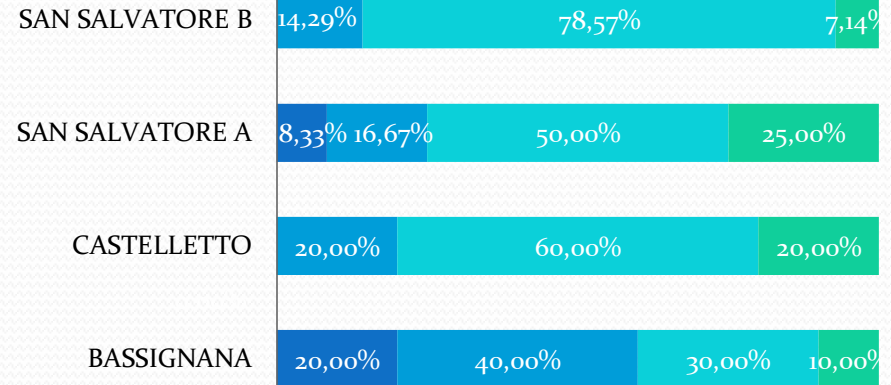


	BASSIGNANA	CASTELLETTO	SAN SALVATORE A	SAN SALVATORE B
■ N	10,00%	0,00%	8,33%	0,00%
■ B	70,00%	20,00%	16,67%	50,00%
■ I	20,00%	40,00%	66,67%	50,00%
■ A	0,00%	40,00%	8,33%	0,00%

# CLASSI QUINTE INGLESE

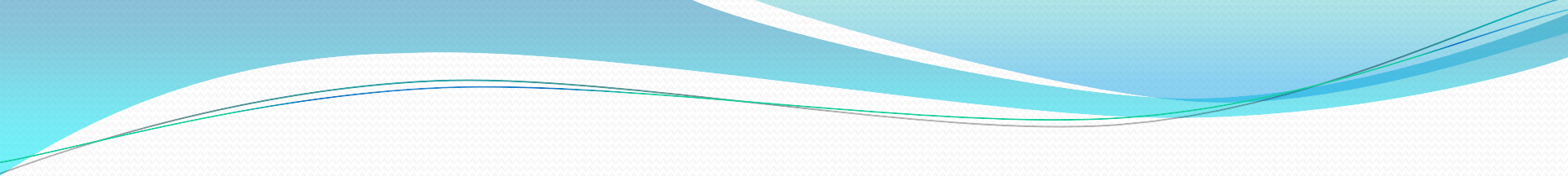


	N	B	I	A
■ BASSIGNANA	2	4	3	1
■ CASTELLETTO	0	1	3	1
■ SAN SALVATORE A	1	2	6	3
■ SAN SALVATORE B	0	2	11	1



	BASSIGNANA	CASTELLETTO	SAN SALVATORE A	SAN SALVATORE B
■ N	20,00%	0,00%	8,33%	0,00%
■ B	40,00%	20,00%	16,67%	14,29%
■ I	30,00%	60,00%	50,00%	78,57%
■ A	10,00%	20,00%	25,00%	7,14%





Le seguenti tabelle evidenziano i livelli conseguiti nelle prove intermedie confrontati con i risultati del primo e del secondo quadrimestre.

# Confronto tra i giudizi del I Quadrimestre, delle prove Intermedie e del II Quadrimestre

## CLASSI PRIME

Valori in percentuale

	I QUAD	PROVE INTERMEDIE	II QUAD
In via di prima acquisizione	0	0	0
Base	27,27%	11,83%	12,50%
Intermedio	42,42%	53,76%	56,25%
Avanzato	30,30%	34,41%	31,25%

# Confronto tra i giudizi del I Quadrimestre, delle prove Intermedie e del II Quadrimestre

## CLASSI SECONDE

Valori in percentuale

	I QUAD	PROVE INTERMEDIE	II QUAD
In via di prima acquisizione	4,65%	3,88%	0,00%
Base	23,26%	27,13%	30,23%
Intermedio	60,47%	44,19%	44,19%
Avanzato	11,63%	24,81%	25,58%

# Confronto tra i giudizi del I Quadrimestre, delle prove Intermedie e del II Quadrimestre

## CLASSI TERZE

Valori in percentuale

	I QUAD	PROVE INTERMEDIE	II QUAD
In via di prima acquisizione	1,96%	6,00%	0,00%
Base	21,57%	22,67%	24,49%
Intermedio	58,82%	37,33%	51,02%
Avanzato	19,61%	34,00%	24,49%

# Confronto tra i giudizi del I Quadrimestre, delle prove Intermedie e del II Quadrimestre

## CLASSI QUARTE

Valori in percentuale

	I QUAD	PROVE INTERMEDIE	II QUAD
In via di prima acquisizione	0,00%	0,82%	0,00%
Base	27,27%	32,79%	21,43%
Intermedio	59,09%	39,34%	64,29%
Avanzato	13,64%	27,05%	14,29%

# Confronto tra i giudizi del I Quadrimestre, delle prove Intermedie e del II Quadrimestre

## CLASSI QUINTE

Valori in percentuale

	I QUAD	PROVE INTERMEDIE	II QUAD
In via di prima acquisizione	2,50%	5,69%	0,00%
Base	32,50%	32,52%	36,59%
Intermedio	65,00%	47,15%	60,98%
Avanzato	2,50%	14,63%	2,44%